



**NF** BEAUTY GROUP  
2024 CATALOG

# GOOD THINGS COME IN GREAT PACKAGING

R+D ENGINEERING • FULL SERVICE • STOCK PACKAGING

At **NF Beauty Group**, we are dedicated to creating captivating, functional, and more sustainable packaging and formulation solutions that protect your products, enhance appeal on the shelves, and keep your customers coming back for more.



## OUR MISSION

With our diverse offerings, our clients can enjoy trend forward developments and relevant designs.

## OUR VISION

To be a prominent leader with operations continuously expanding globally.

## OUR VALUES

Building successful and trusting relationships with our customers and suppliers around the world.

## OUR SERVICES

- Business Development
- Factory & Vendor Liason
- Global Partnerships
- Custom Tooling
- Logistics
- Safety Stock
- Full Service
- Sustainable Packaging

## MAJOR MARKETS

- Skincare
- Personal Care
- Color Cosmetics
- Fragrance
- Hair + Body
- Pharmaceutical



# AWARD WINNING PACKAGING

## WRAPPED IN WINS

Embrace excellence with our award-winning packaging, a testament to innovation and style. We extend heartfelt gratitude to our clients and vendors for their unwavering commitment to turning visions into captivating, celebrated realities.



COSMOPACK AWARDS FINALISTS  
CPNA - Ambit Tottle  
2023



BEST PACKAGING DESIGN  
Celeste Dropper  
2023

### NEWBEAUTY

NEW BEAUTY AWARDS  
GoopGenes - Face Oil  
2022



READER'S CHOICE AWARD  
Biossance - Squalane Rose Oil  
2021



BEST OF BEAUTY  
Eleven - Unrivaled Sun Serum  
2020



BEAUTY O-WARDS  
Fenty Skin - Hydra Vizor  
2020



HEALTH BEAUTY AWARDS  
Biossance - Squalane Night Serum  
2020



SKINCARE AWARD  
Honest Beauty - Hydrogel Cream  
2019

# BRANDS WE'VE WORKED WITH

BIOSSANCE™

VERSED

SUNDAY  
RILEY

TATCHA

L'ORÉAL

TULA  
SKINCARE

PAULA'S CHOICE

Murad.

fresh.

HOURLASS

dermalogica  
professional-grade skin care by The International Dermal Institute

Guthy | Renker

beautyblender®

Kate  
Somerville

HONEST  
BEAUTY®

Too Faced

FENTY SKIN  
BY RIHANNA

BEAUTYCOUNTER

P&G

Cetaphil®

ERNO  
LASZIO



6

# CONTENTS



**10 FEATURED**  
Unveil radiant must-haves for a dazzling beauty routine.

**10 BOTTLES**  
Elevate elegance with sleek vessels for your essentials.

**10 DROPPERS + AMPOULES**  
Dive into precision for skincare.

**10 JARS**  
Indulgence in every scoop of beauty brilliance.

**10 STICKS**  
Swipe on instant glamour with on-the-go chic.

**10 TUBES + TOTTLES**  
Squeeze out style and glamour.

**10 COLOR + COSMETICS**  
Paint your world with a bright palette.

**10 FULL SERVICE**  
Crafted perfection for a radiant beauty revelation.



# FEATURED



**ALL-OUT CAPLESS BOTTLE**  
30mL F3 AQ016

## OFF TO THE RACES



Ambit Tottle is designed with a racetrack configuration and elongated side press disc cap. This unique shape allows for maximum usage of store display space and minimizes vanity space for users.

The flexible body is easy to squeeze product out, while fitting perfectly in the palm of your hands.

# AMBIT TOTTLE



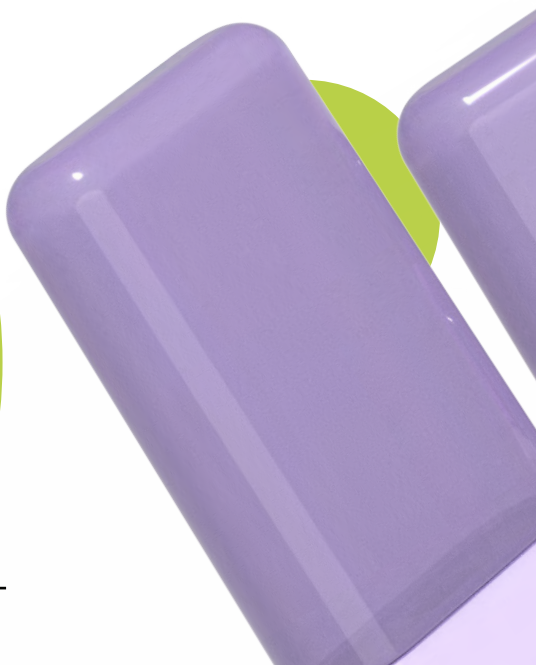
Slim, Sleek Design  
Multi-Layered Bottle  
PCR Availability



35mL J5 T001  
50mL J5 T002



Cream  
Lotion  
Foundation



# SLICE JAR

## EASY AS PIE

Our Slice Jar not only reduces waste but also come equipped with a thoughtfully integrated spatula, ensuring each application is clean, hygienic, and precise. No more messy fingers or lost spatulas – it's all in one place, right where you need it.



Recyclable Material  
Built in Spatula  
PET or AS Spatula  
Available



50g F4 M085-1  
100g F4 M086-1



Cleansing balm  
Sleeping cream/  
gel mask

# ECO COMPACT

## HANDLE THE EARTH

Made with the environment in mind, this compact is designed to make you look and feel beautiful while taking a step toward a greener future.

With it being monomaterial, it ensures that it can be recycled without the need for separating different materials, therefore reducing unnecessary waste.



Recyclable  
Monomaterial



4-Well F1 ZZ370A  
6-Well F1 ZZ370B  
9-Well F1 ZZ370C



Eyeshadow

# ALL-OUT CAPLESS BOTTLE



## NO CAP ON GREEN

All-Out Capless Bottle - It's not just a bottle; it's a commitment to sustainability, a testament to luxury, and a game-changer for your skincare regimen. And with the capless pump design, there's no fuss or extra steps – just pure convenience.



Refillable  
Luxe, Keepsake Outer Jar



15mL F3 AQ015  
30mL F3 AQ016  
50mL F3 AQ017



Essence  
Toner  
Ampoule

# AIRTIGHT MONO STICK



## TUCKED + TIGHT

This features a secure sealing, keeping your products free from air exposure when closed. By choosing this packaging, you are actively participating in the reduction of multi-material plastics so that we can create a more eco-conscious beauty industry.



Airtight  
Monomaterial  
Recyclable



10g Z5057-010  
20g Z5058-020  
20g Z2048-020



Sunscreen Stick

# BOTTLES



**CENTER DISPENSE BOTTLES**  
260mL F2 ZZ421



## PUMP N' TWIST

Helix Pump offers an alternative to single use airless pumps. The outer holster makes it ideal for keepsake artwork or limited edition designs. The twist base feature reveals the pump, making it great for travel, as the pump hides away in a locked state when not in use.

# HELIX PUMP



Refillable  
PP Inner Bottle  
Locking Pump  
Available with TPE Spring Pump



30mL F3 AE244  
50mL F3 AE245



Serum  
Lotion



# CELESTE PUMP

## DISPENSE NATION

This product offers a complete package with a unique dispensing story that is embedded with the material of the metal-free pump. With its TPE spring, our pump presents an efficient design alongside an element of sustainability.



17



Recyclable  
Available with TPE  
Spring Pump  
Monomaterial



15mL J3 T2006-1  
30mL J3T2006-2  
50mL J3 T2006-3



Serum  
Lotion  
SPF

# BUOY COLLECTION

## CRYSTAL CLEAR

In our quest for a greener future, we've meticulously designed each component to be effortlessly recyclable. Every part, from the glass bottle to the metal-free pump, can be separated and given a new life through recycling.

18



Lotion  
Ampoule

# PILLAR PUMP



## POSH IN A PUMP

A unique blend of sophistication and luxury. Crafted from premium glass, our bottle exudes timeless elegance and the capless pump dispenser easily delivers product without the fuss. Also available with a premium self-locking option.



15mL  
30mL  
50mL  
30mL (L Lock) F6 ZZ453



Premium Feel



Essence  
Toner  
Ampoule

## KEEP IT COOL

The fun, eye-catching Chill Pills provide a playful cylindrical shape, with various different closure options to create a pump, toner, and more! The oblong 50/50 cap and bottle proportions stand out against traditional pumps.

# CHILL PILLS

20



PET Bottle  
Various Closure Options  
Lightweight



40mL F3 ZZ337  
60mL F3 ZZ338  
120 mL F2 ZZ238T  
150 mL F2 ZZ239T



Toner  
Lotion  
Serum

200ml F3 ZZ455  
500ml F3 ZZ339W



# SPACE PUMP

## INTERSTELLAR

Stay trendy with our oval shaped Space Pump! The ergonomic shape fits well into the hand and provides maximum space for branding and ingredient lists. Maximize shelf space and be visible with the Space Pump.



Oval Bottle + Piston  
Minimal Shelf Space  
Ergonomic Shape



50mL F3 L155  
80mL F3 L155-1  
100mL F3 L155-2  
120mL F3 L155-3



Lotion  
Essence  
Serum

# SHIFT PUMP

## MAKING MOVES



15mL F3 AE239  
30mL F3 AE240  
50mL F3 AE241



# NIMBUS MISTER



## THE FINE LINE

The Nimbus Mister offers a heavenly application and experience. Fine mist is actuated creating an even refreshing coat to the skin. Prime and glow with this simple and modern pack.



PET Bottle  
Fine Mist Spray  
PCR Can Be Incorporated



60mL F3 R135-1H1S  
80mL F3 R135H1-1S  
100mL F3 R135H1  
120mL F3 R136H1



Toner  
Hair spray

## ROCK THE REFILL



The Calista Series brings monomaterial construction and airless engineering to our basic EL pumps. The modern, capless design allows for ease of application.

Also offered as a refillable pack, this version combines a monomaterial pump engine and refillable system with a modern, capless design.

# CALISTA SERIES



Refillable  
Recyclable  
Available with TPE Spring Pump  
Monomaterial



30mL A3014-030  
50mL A3014-050  
30mL A3014-030R  
50mL A3014-050R



Lotion  
Cream



# SUNDEW PUMP

## RADIANT RITZ

The cooling tip provides a soothing and refreshing sensation, making your skincare and cosmetic routine a spa-like experience.

Crafted from high-quality glass, and the added weight of the glass bottle provides a luxurious feel and maximizes decoration potential.



25

Cooling Applicator



7mL F3 AR795  
15mL F3 AR795-1



Eye Cream  
Eye Gel

# GHOST BOTTLE

## SEE IT THROUGH

The cylindrical shape of the Ghost Bottle presents a simple and minimal approach to clean packaging. The refillable mechanism provides a more sustainable alternative to the traditional pump.

The curved base on the inner bottle requires the outer holster to hold it in place, ensuring the keepsake outer bottle will be protected.



Refillable  
Reduction of Overall  
Plastic  
Locking Pump



80mL Z3029-080R



Ampoule  
Lotion

# FRAME POUCH



## PICTURE PERFECT

Frame Pouch is the perfect answer to reducing plastic for larger size capacities. Because the frame has a hollowed out front and back, overall plastic is decreased, and the refillable pouch is easily replaced when finished.



Refillable  
Minimal Use of Plastic



300mL F3 ZZ462



Shampoo  
Conditioner  
Shower Gel



## CURATED CLASS

Crafted to perfection, these bottles offer a weighty, premium feel that reflects the excellence of your products within. The substantial design not only adds a touch of opulence to your routine but also ensures the utmost protection and preservation for your valuable formulations.

# BAUBLE BOTTLE



Various Shapes/Sizes Available



Serum  
Oil



# RUN-IT-BACK OIL PUMP



## MESS-FREE

Say goodbye to the frustration of messy spills and wasted product caused by traditional oil pumps. Our cutting-edge suction technology ensures a seamless and mess-free oil application every time, allowing you to indulge in the luxury of your beauty routine without the hassle.



18/410  
F3 ZZ489A  
F3 ZZ489D

Cleansing oil

# 50/50 REFILLABLE PUMP

30



**HALF N' HALF**



Refillable  
Metal Spring



30mL F3 ZZ541  
50mL F3 ZZ541-1



Serum

# TWIST POWDER DISPENSER



## TWIST + PROTECT

Say goodbye to spills, waste, and mess as you take control of your powder products like never before. With a simple twist of the cap, our dispenser cleverly covers the powder dispensing holes with a silicone seal, ensuring that not a speck of product is dispensed when closed.



Precise Application  
Mess-Free



100g F2 ZZ412  
150 F2 ZZ412-1



Dry Shampoo  
Baby Powder

# CENTER DISPENSE BOTTLES



## NO LEAKS

Whether you're using it for shampoo, body wash, or any liquid product, you'll enjoy an easy, mess-free access to just the right amount every time. It is engineered for a secure and leak-resistant seal so no more accidental spills or wasted product-this bottle keeps your formula where they belong!



Precise Application



260mL F2 ZZ421



Shampoo  
Body Wash

# SOLITAIRE PUMPS



Recyclable  
Monomaterial



30mL Z3043-030A-M  
50mL Z3043-050A-M  
70mL Z3043-070A-M  
100mL Z3043-100A-M  
120mL Z3043-120A-M



Cream  
Lotion  
Serum  
Hair Styling

## BETTER IN PAIRS

We've successfully transferred all functional details to sustainably improve the airless system.

With the entire unit made up of one single material, PP, the chances of recyclability highly increase. Depicted are a few of our favorites.



Recyclable  
Monomaterial



30mL Z3043-030B-M  
50mL Z3043-050B-M  
70mL Z3043-070B-M  
100mL Z3043-100B-M  
120mL Z3043-120B-M



Cream  
Lotion  
Serum  
Hair Styling

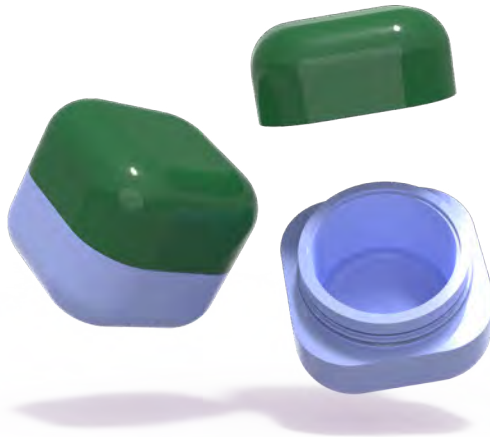
# CUBIE PUMP



100mL F3 AE249R



# CUBIE JAR



50g F4 AE130R  
100g F4 AE131R



# PURITY COLLECTION



Refillable



30mL TAP-064A  
50mL TAP-064



Cream  
Lotion  
Serum  
Hair Styling

## CLEAN + CLEAR

The Purity Collection brings brands to the future of eco with efficient monomaterial construction and airless engineering. Purity's unique design and actuation gives full presence to recyclability.



Refillable



30mL AP-063A  
50mL TAP-063



Cream  
Lotion  
Serum  
Hair Styling

# MIX SPRAYERS



**USE IT ALL**



# DROPPERS + AMPOULES



**AUTOFILL DROPPER**  
30mL L7035-030

## EVERY DROP



One of three components in our Celeste Line offers an airless, springless narrative with a unique dispensing technology story that is embedded with the material of the pump.

With its TPE pump, our Celeste Dropper presents a metal-free alternative for medium to high viscosity formulas, and is an easy to recycle pack out optimizing convenience and simplicity.

# CELESTE DROPPER



Recyclable  
TPE Spring  
Monomaterial



15mL E3002-015  
30mL E3002-030  
50mL E3002-050  
50mL E3003-015

30mL E3003-030  
50mL E3003-050



Face Cream  
Toothpaste  
Serum



# HILL DROPPER

## OVER THE HILLS

Say goodbye to the conventional teat-shaped bulb and welcome a fresh, distinctive perspective to the skincare industry. Our unique Hill Dropper bulb not only stands out but also enhances your product application, delivering precision and control like never before.



39



Ergonomical Button  
Precise Dosage



15 mL F7 XX411



Oils  
Serums

# TONIC DROPPER

**NATURE'S POTION**

40



10mL Z7037-010

Lotion



# THICC DROPPER



## THE WAY YOU LIKE

Stand out in a competitive market with a unique and functional design. This innovative glass dropper features a heavy luxe base and short, squattier appearance, setting it apart from the competition and making it an exceptional choice for your skincare and beauty needs.



Heavy Luxe Base  
Unique Size Impression



50mL F7 XX401



Oils  
Serums



## SPOT IT UP

The Pilot Ampoule offers direct and precise application. The TPE pump mechanism is great for thicker formulations and evacuating majority of the formula from the package, leaving barely any remaining residue behind. Perfect for spot treatments and lip masks, you can never go wrong.

# PILOT AMPOULE



Recyclable  
TPE Spring  
Monomaterial  
Single & Double Wall Options



5mL E3001-005  
15mL E3001-0015  
30mL E3001-030  
50mL E3001-050



Eye Cream  
Acne Treatments



# RADIANCE DROPPER



## FOR THE WORLD

The power of sustainability without compromising performance. Crafted from a single material, polypropylene, it's environmental responsibility.

By choosing Radiance Dropper, you're making a bold statement that sustainability is at the heart of your brand.



Recyclable  
Monomaterial



30mL F7 ZZ253



Oils  
Serums

# MONOGRAM BULB



## PERSONALIZE

Create a lasting impression with every drop, as you tailor the look and feel of your packaging to reflect your unique identity. With our innovative embossing technology, your product not only delivers excellence but also leaves a lasting mark in the minds of your customers.



Brand/Logo Customization



Available in Various  
Bulb Materials



Oils  
Serums

# AUTOFILL DROPPER



## NO HASSLE

With a simple push of a button, the dropper automatically fills with the desired amount of product, making it perfect for products that require precise measurement. You will no longer need to worry about unpredictable dispensing of your holy-grail formulas.



Precise Dispensing  
Ease of Use



20mL L7035-020  
30mL L7035-030  
30mL L7035-030-2



Oils  
Serums

# PURE PRESS DROPPER



## SO STUNNING

With each gentle press, you control the perfect amount of product, ensuring every drop is a masterpiece of precision. Redefining sustainability in style, our innovative dropper is designed with the environment in mind. Crafted from a single recyclable material, it's your gateway to a greener tomorrow.



Recyclable  
Monomaterial  
Ease of Use



30 mL Z7031-030P  
50 mL Z7031-050P



Oils  
Serums

# CHROMA DROPPER



## DOUBLE THREAT

Unleash your creativity and customize your packaging like never before with our groundbreaking dropper featuring a multi-color collar. Your skincare, your style, your way! Make a statement with the ultimate in personalization.



Unique Decoration  
Capabilities



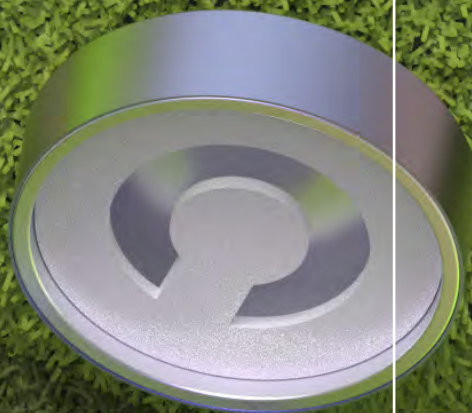
100 mL M7078-100



Oils  
Serums



# JARS



**ECO JAR**  
50g N4001-050

## EASY TO RECYCLE

Our One-Touch Jar, featuring a cap that easily unscrews with just one hand, revolutionizes your skincare experience with a host of benefits. No more fumbling with two hands - our innovative cap design allows for quick and easy access to your skincare or cosmetic products, even when you're on the go.



50

# ONE-TOUCH JAR



Efficient Cap Removal  
Ease of Use



50g Z4001-050



Cream



# BLOCK JAR

## ALL-LUMINUM

Elevate your brand's image with the sleek and sophisticated design of the double-wall square glass outer jar. Within, you'll find a thoughtfully designed refillable plastic inner jar, combining convenience and eco-friendliness to reduce waste while maintaining the integrity of your cherished skincare products.



51



Refillable  
Luxe, Keepsake Outer  
Jar



15g F6 ZZ451  
30g F6 ZZ451-1  
50g F6 ZZ451-2



Cream

# STRATA JAR

## ONE FITS ALL

Strata Jar is a monomaterial stacking jar with a diverse compatibility and formulation story. Fully recyclable and simplified construction makes this pack a perfect solution for day and night or 2-step skincare regimens.



Recyclable  
Artwork Alignment  
Capabilities  
Monomaterial

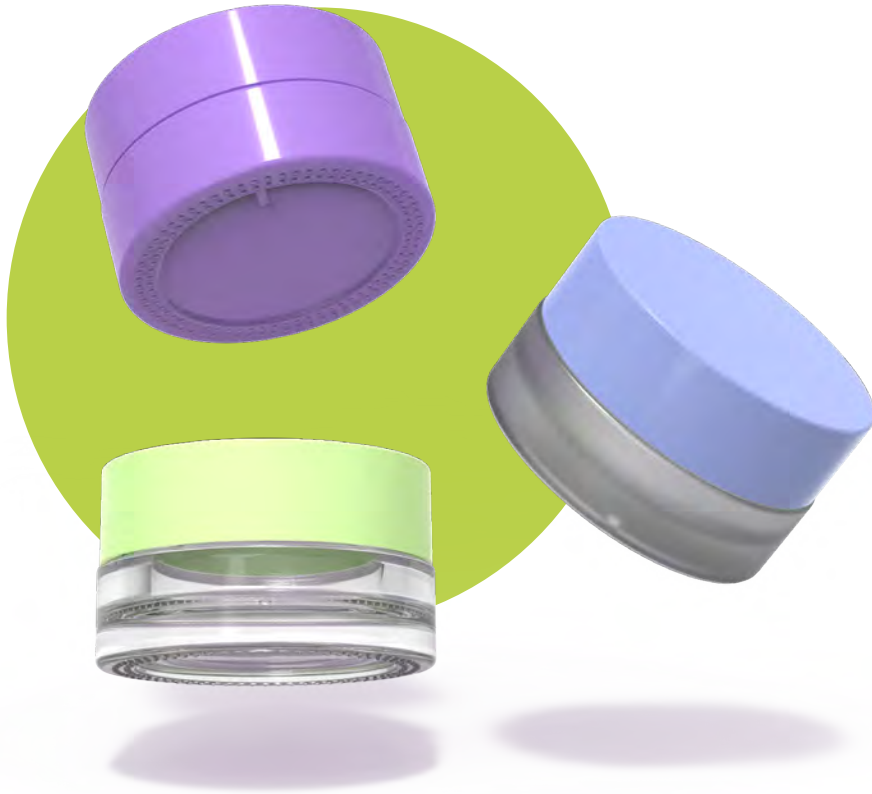


25g+25g  
Z4020-25/25



Day & Night  
Cream

# CALIBRE JAR



## INVINCIBLY GOOD

The Calibre Jar is a small glass jar with a shallow fill area. The cap has been designed to allow for artwork to be aligned when cap and jar are closed.



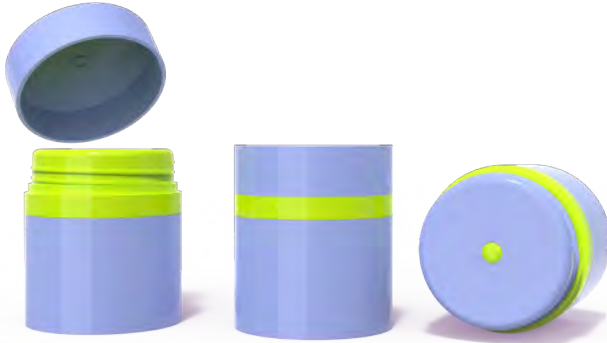
Artwork Alignment  
Capabilities  
Low Profile



10g J6 T006



Cream Concealer  
Lip Balm



## MORE FOR YOU

Complete your sustainable moment with our Celeste Jar. It is one of three components in our Celeste Line that offers an airless, springless narrative with a unique dispensing technology story that is embedded with the material of the pump. With its TPE pump, our airless jar presents a metal-free alternative for serums, cream, lotions, masks, and more.

# CELESTE JAR



Recyclable  
TPE Spring  
Monomaterial



50G F3 L208



Body Cream  
Body Butter



# ENDLESS JAR

## EVERLASTING

The Endless Jar is a refillable and monomaterial solution to large format jars for skincare and body care. The combination of a pop out refillable PP inner jar and divoted PP Cap creates for a sustainable story for endless formulation possibilities.



55



Recyclable  
Refillable  
Monomaterial



100g F4 R072R  
150g F4 R073R  
200g F4 R074R



Body Cream  
Body Butter

# ECO JAR

## INVINCIBLY GOOD

Eco-Jar combines our Easy Peel Liner, an easy to remove patented liner, with a fully recyclable double aluminum cap and glass jar. By incorporating an all aluminum cap with removeable liner, Eco-Jar is the perfect solution for easily recyclability.



All Aluminim  
Doublewall Cap  
Patented Easy to  
Remove Liner



30g N4001-030  
50g N4001-050



Cream Foundation  
Mask

# STICKS



**ALL-OUT 100 STICK**  
15g H2003-015



## EARTH FRIENDLY

The Paper Tube combines a paper outer layer and PE inner layer to provide a more sustainable option than compared to traditional tubes. The combination of paper and plastic helps to hold the integrity of its shape and function, while also reducing the total overall use of plastics.

# PAPER STICK



FSC Certified Paper Availability  
 Various Closure Options: Screw Cap,  
 Flip Cap, Airless Pump  
 Available in White, Black, and Craft



Various Sizes Available



Sunscreen Stick  
 Multibalm Stick



# MATCH STICK

## SO COMPATIBLE

With our distinct technology, our Match Sticks have two remarkable options: a powerful spring-loaded twist base or a recyclable plastic spring-loaded twist base, both delivering a satisfying self-alignment mechanism. Designed with an ergonomic shape, our stick component offers comfort and precision in every application.



59



Unique User  
Experience  
Monomaterial  
Recyclable



20mL F2 ZZ413  
20mL F2 ZZ413A



Sunscreen Stick  
Multibalm Stick

# HELIX STICK

## TWIST AND TURN

Helix Stick highlights a monomaterial lipstick component that is made of monomaterial PET, helping emphasize the sustainable storyline. The use of just one material allows for easy recyclability, eliminating the need for any separation when done using.



Recyclable  
Refillable  
Monomaterial

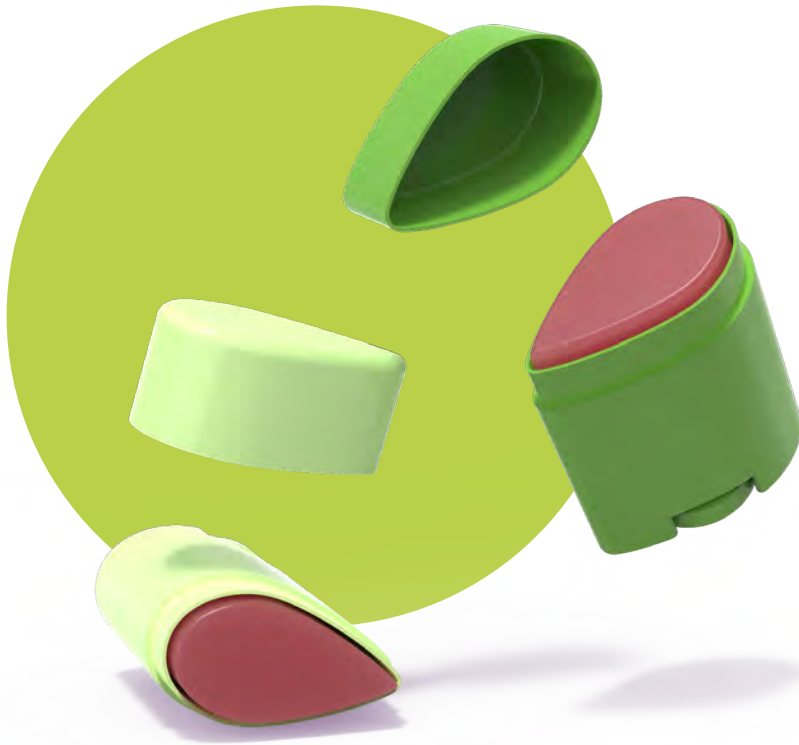


5g F1 ZZ303  
5g F1 ZZ303R



Lipstick

# DROPLET STICK



## JUST ONE DROP

Elevate your makeup game with a twist-up stick that's shaped like a teardrop, granting you unparalleled control and precision for flawless application on your face. Crafted with the modern artist in mind, our Droplet Stick redefines how you sculpt and define your features.



Ergonomic Droplet Shape  
Propel/Repel Mechanism  
Top/Bottom Fill Options  
Available



15g H2002-015  
15g H2002-015E  
20g H2002-020B  
20g H2002-020T



Sunscreen Stick  
Multibalm Stick



## PACK A PUNCH

Our Ammo Stick is our response for an eco-friendly alternative stick component. With the durable outer case and easy to swap refill cartridges, our Ammo Stick creates a lasting circular lifetime. By reducing the initial production of plastic, brands are able to take sustainability into their own hands.

# AMMO STICK



Refillable  
PP Inner Bottle  
Propel and Repel Mechanism



30g F2 ZZ311  
50g F2 ZZ312



Sunscreen Stick  
Multibalm Stick



# ALL-OUT 100 STICK



## USE IT ALL

All Out 100 Stick solves the common issue of having excess product leftover towards the end of a stick. All Out 100 Stick allows for the piston to be fully pushed beyond the standard length so users can utilize as much formulation as possible with minimum waste.



Little Formulation Waste  
100% Propelling Mechanism



15g H2003-015



Sunscreen Stick  
Multibalm Stick

# UPSIDE DOWN STICK



## BACK AROUND

Upside Down Stick comes threaded making it secure when traveling.



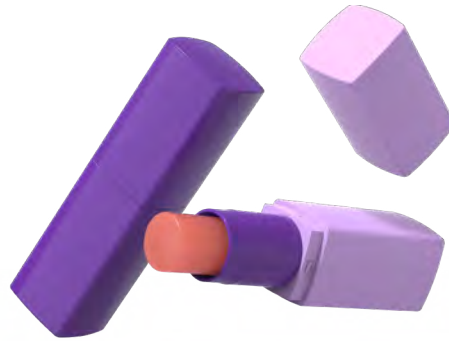
Z2028-010



Chapstick  
Sun Stick



# SOL REFILLABLE STICKS



Monomaterial  
Refillable  
Recyclable



4g Z2056-004R  
8g Z2056-008R



Sunscreen

## POWER OF EL SOL

Elevate your beauty routine while minimizing your environmental footprint with our Sol Refillable Stick. Crafted from monomaterial polypropylene, it's designed with sustainability in mind, making it easily recyclable. Refill, reuse, and redefine your beauty essentials, knowing that you're making a positive impact on the planet.



Refillable  
POM Free  
Top/Bottom Fill  
Available



10g D2010-010R  
20g D2011-020R



Sunscreen



# TUBES + BOTTLES

NIF BEAUTY GROUP

NIF BEAUTY GROUP

**AXIOM AIRLESS TUBE**  
Available in Various Sizes



## TRAVEL SIZED

Slim Tottle offers a sleek and minimal design without sacrificing function. Great fit for travel and storage with a small footprint. The thin packaging design maximizes the use of vertical space, allowing more products to be displayed on retail shelves.

# SLIM TOTTLE



Slim, Sleek Design  
Minimizes Storage Space



30mL F5012-030  
50mL F5012-050



Hand Cream  
Body Lotion



# EVITA TUBE

## VERSATILITY

This is where safety and indulgence converge to create a skincare experience that's as secure as it is luxurious. Elevate your routine with peace of mind, knowing that each application is protected by a seal of trust and authenticity. Revel in the joy of breaking the seal and discovering the potent, fresh formulations within.



69



Secure Closure  
Leak-Proof



Available in Various  
Sizes/Diameters



Serums  
OTC Products

# DUAL TUBE

## DOUBLE TROUBLE

Experience the power of two in one with a single tube that holds two different formulas, offering you the ultimate flexibility in your skincare, makeup, haircare, and bodycare routine. Seamlessly switch between formulations, tailoring your application to your needs, whether it's day-to-night formulations or a customized makeup look.



70



Unique User  
Experience  
Dual Formula



Available in Various  
Sizes/Diameters



Day & Night  
Formulas  
OTC Products

# SOL TUBE



## ALL-IN-ONE

The Sol Tube – a breakthrough in sustainable packaging that is manufactured through integrated molding, requiring no additional tube heading like traditional tubes. The monomaterial tube minimizes overall use of plastic and is fully recyclable.



Recyclable  
Monomaterial



Available in Various Sizes/  
Diameters/  
Closures



Sunscreen  
Lotion  
Toothpaste

## SOFT + SUPPLE



Introducing a game-changer in cosmetic packaging, designed for flawlessness in every application. Our squeezeable Pillow Tottle comes with a soft TPU applicator that redefines convenience and precision, making it the perfect choice for products requiring gentler application for sensitive areas, like lip and concealer products.

# PILLOW TOTTLE



Soft TPU Applicator  
Precise Application  
Unique User Experience



60mL Z5006-060



Neck/Décolletage  
Formulas  
Creams



# APPLICARE TOTTLE

## PRECISION

No more struggling to control the output or accidental spills. With our user-friendly bottle, you can dispense just the right amount of your favorite skincare products with ease and apply using our our lip or dropper tip applicators.



73



Precise Application  
Unique User  
Experience  
Interchangeable  
Applicator



10mL G5005-020  
15mL G5006-015  
20mL G5007-010



Eye Cream  
Lip Balm

# REFILLABLE ROLLER



## LET IT ROLL

Refillable Rollerball replaces traditional one-time use rollerballs currently out in the market with a double wall body feature with a keepsake outer bottle, creating a heavier luxe feel and reusable massage rollerball. Available with Full PP or Stainless Steel Rollerball.



Recyclable  
Refillable  
Monomaterial



50g F2 M016  
75g F2 M017



Essential Oils  
Liquid Deo  
Athletic Fresheners

# AXIOM AIRLESS TUBE



## HYBRID CARE

Our Axiom Airless Tube dispensing systems in skincare provide superior product protection, precise application, reduced waste, and extended shelf life. These benefits contribute to a more efficient, hygienic skincare experience for consumers while offering a sleek, flush, capless design.



Available in Various Sizes/  
Diameters



Eyecream



# LUMINOUS TOTTLE



## DIRECTLY APPLY

The Luminous Tottle is perfect for both on-the-go and full size products based on your desired formula. While the tip provides precise application, the bottle can be easily squeezezd for easy control. This is the ideal pack for any cream, serum, or SPF formulations.



Flexible & Soft  
Touch Bottle  
Precise Application



30mL F5 ZZ055  
60mL ZZ056-1



Cream  
Sunscreen

# COLOR + COSMETICS



**ENDLESS COMPACT**  
2.5g x 3 Z1001-003R



## SET THE STAGE

Monument Line features a glass bottle with various closure options: Pump, Doefoot Applicator, and Dropper. The glass bottle allows for the Monument to be recyclable.

# MONUMENT LINE



Glass Construction  
Heavy Base  
Luxe Look and Feel



30mL J6 T011



Serum  
Lipgloss  
Hair Oil



# ENDLESS COMPACT

## ETERNALLY YOURS

Endless Compact drives your sustainable goals with a refillable story. The removable fill pans snap easily in and out of place, providing countless customizable options.



79



Multiple Formulation  
Combinations  
Back-Push Refillable  
Pans  
Travel Friendly



2.5g Z1001-001R  
2.5g x 3 Z1001-003R



Eyeshadow

# VITRIC MASCARA

## A STEP UP

Unlike plastic, glass preserves the integrity of your product. A beauty breakthrough that shatters the norms of conventional plastic containers. Crafted with precision and sustainability in mind, our glass bottle not only stands out in sophistication but also delivers a transformative experience.



Glass Construction  
Luxe Look & Feel



7mL F1 ZZ377  
10mL F1 ZZ377-1  
7mL F1 ZZ378  
10mL F1 ZZ379-1



Mascara  
Lipgloss

# TWIST MASCARA



## LASH LOVE

Say farewell to clumps, smudges, and uneven coverage. Our curved wand design revolutionizes your beauty ritual, effortlessly hugging each lash from root to tip. Embrace the power of precision as the curved wand adapts to the natural contour of your eye.



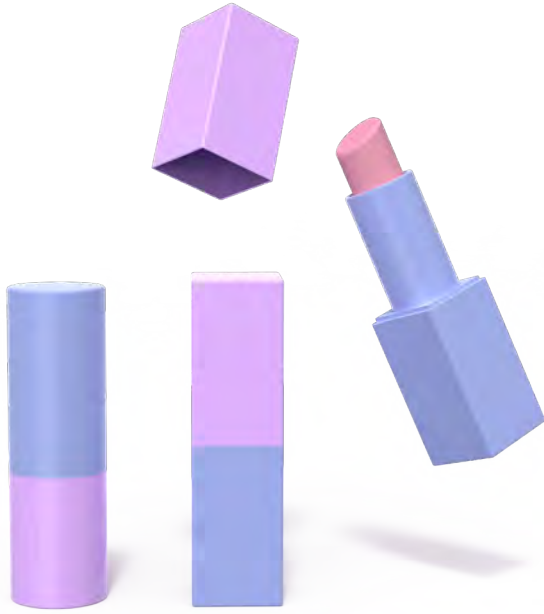
Unique User Experience  
Precise Application



15mL F1 ZZ190



Mascara



## IT'S POPPIN'

The lightweight design houses a secret of luxury, as a carefully added weight within the casing creates a satisfyingly luxe feel every time you hold it.

Embrace the future of beauty with our refillable solution, reducing waste and celebrating the environment without compromising on glamour.

# LUMINA STICK



Recyclable  
Refillable  
Monomaterial



3.5g F1 ZZ371-1R  
3.g F1 ZZ371-2R



Lipbalm  
Lipstick



# BOUNDLESS JAR

## TAKE IT WITH YOU

Designed with eco-consciousness in mind, Boundless Jar combines elegance with practicality, allowing you to enjoy your favorite powder products while reducing waste. With its sleek and durable design, you can refill your jar again and again, making it a lasting companion in your makeup collection.



Refillable



15g F1 ZZ234B-1R



Powder



# BOUNDLESS COMPACT



## NO BOUNDARIES

Choose this refillable design for endless makeup products! This innovative compact enhances your beauty routine but also minimizes waste, making it a choice you can feel good about. Be a part of the change, and embrace the beauty of eco-consciousness with every touch-up.

Refillable



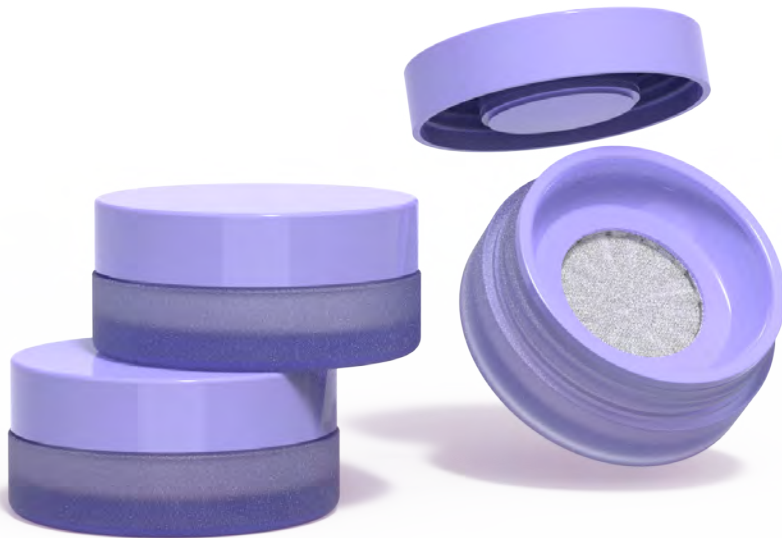
15g Z1034-015  
15g Z1035-015  
20g Z1036-020



Blush  
Bronzer  
Highlighter



# MESH POWDER JAR



## QUICK TOUCH-UP

The specially designed cap creates a barrier, preventing air and foreign substances from passing through when closed, ensuring your powder stays fresh and pure. Enjoy effortless, mess-free application with the built-in mesh dispenser.



Mess-Free



8g Z1021-008



Powder

# ANGLED EYELINER PEN



## IN CONTROL

Our various Angled Eyeliner Pen are the ideal solution to a quick and easy application process. With different tip options like felt, brush, stamps, and more, possibilities are endless! The combination of a slender handle and a configurable angle option allows for optimal control with minimal effort.

Unique User Experience  
Precise Application



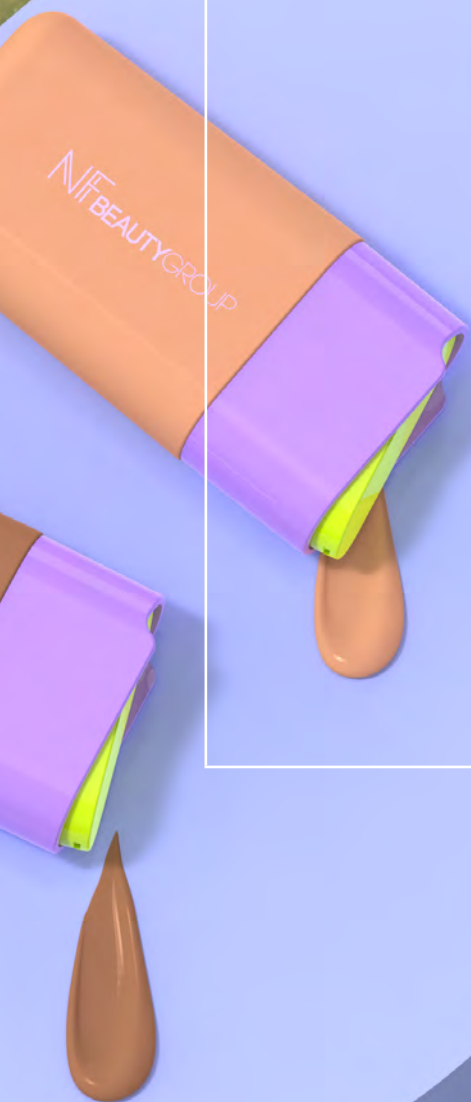
0.8cc W1004-001



Eyeliner



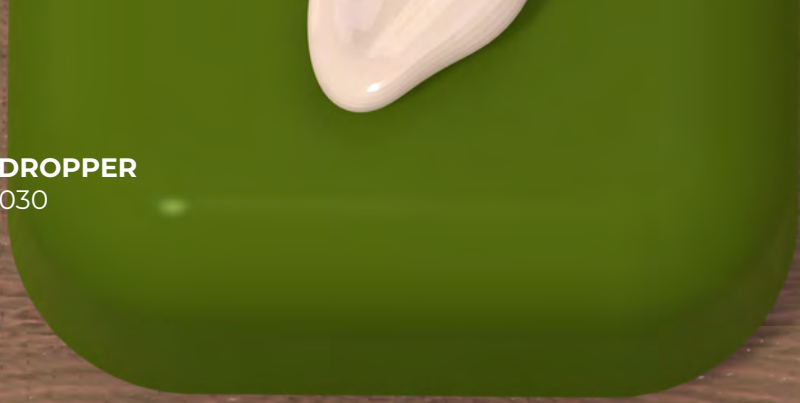
# TURNKEY



**HEAVY BASE DROPPER**  
30mL M7040-030

NIF BEAUTY

**HEAVY BASE DROPPER**  
30mL M7040-030



# CONTENTS



**10 FEATURED**  
Breakthrough formulations for radiant beauty.

**10 SKIN CARE**  
A skincare routine with cutting-edge formulations.

**10 COLOR COSMETICS**  
Vivid hues in cutting edge formulas.

**10 HAIR CARE**  
Transform your tresses with our exclusive care.

**10 BODY CARE**  
Indulge in luxury and self care with these concoctions.

**10 SPF**  
Embrace sun-kissed protection with our sun care infusions.



# FEATURED FORMULAS



**HEAVY BASE DROPPER**  
30mL M7040-030



## TAKE A PEEK AT OUR SECRET FORMULAS

In a world of better skin, hair, and body care, we've unlocked the best formulas to keep it all up. Ceramides to ensure optimal barrier function,

acne-fighting ingredients to address specific concerns, and sensorial formulas to enhance the user experience.



# CERAMIDE

## 1% Ceramide

**Capsule Stick:** An encapsulated ceramide stick simultaneously moisturizes the skin. The 1% high-content ceramide capsules burst upon application, leaving the skin feeling fresh.



### **Ceramide Sleeping Mask**

Melts on application, leaving the skin feeling smooth and moisturized.



### **Cera Cream**

Restore and moisturize your skin's barrier in luxury. Available in 1%, 2%, and 4%.



### **Cera 2-Layer Mist**

A light bi-phase formula composed of 80% water and 20% essential oil.

# ACNE



## 2% BHA Cera Serum

Exfoliating powers combine to encourage clear and glowing skin.



## Treatment Balm

Restore and moisturize your skin's barrier in luxury. Available in 1%, 2%, and 4%.



## Tea Tree Trouble Care Stick

An on-the-go solution that calms and relieves troubled skin caused by acne.

# SENSORIAL



## Vegan Collagen Water-Drop Cream

With a complex of 10 hyaluronic acids, it provides lasting moisture.



## Cica Mist

Gel essence that adheres to the skin, providing instant and potent moisture to the skin.



## Vegan Collagen Oil-Drop Cream

A pudding texture in which oil droplets burst on the skin upon application.



# SKIN CARE



**HEAVY BASE DROPPER**  
30mL M7040-030



# INDULGE IN THE ULTIMATE SKIN CARE EXPERIENCE

Elevate your skincare routine to new heights and achieve the flawless complexion you've always dreamed of. From cleansers to treatments,

we've got you covered with our curated range of products that cater to every step of your skincare routine. Your skin journey begins here!



**Toners:** Elevate your hydration game with our nourishing toners, formulated to replenish and balance your skin's moisture levels.

**Cleansers:** Start your skincare ritual with our luxurious cleansers that delicately remove impurities and prepare your skin for the next steps.



Image by



**Serums & Ampoules**

Treat your skin to address concerns and enhance your natural glow.



**Essences**

Unlock the essence of beauty with our elixirs that infuse your skin with a burst of vitality.



**Moisturizers**

Designed to keep your skin supple, hydrated, and protected throughout the day.



**Facial Sticks**

Take your skin care on the go. These are ideal for touch-ups and targeted treatments.



**Masks**

Experience spa-worthy indulgence at home with our assortment of masks.



**Lip Treatments**

Pamper your pout with our lip-loving treatments, keeping your lips soft and smooth.



**Facial Peels**

Renew your skin with our facial peels that reveal a brighter complexion.



**Eye Treatments**

Show your beautiful eyes some love with our specialized eye treatments and formulas.



**Facial Mists**

The perfect way to hydrate and revitalize your skin whenever you need a boost.



# COLOR COSMETICS



**HEAVY BASE DROPPER**  
30mL M7040-030



100

# ELEVATE YOUR BEAUTY GAME WITH COLOR

Introducing our exquisite catalog of color cosmetics, where every shade and product is carefully curated to enhance your natural

beauty and express your unique style. From a flawless base to glam glitters, we've got you covered with a stunning array of essentials.



**Primer:** Prepare your skin with our silky primers that smooth, hydrate, and create the perfect base for long-lasting makeup.



**Concealer:** Hide imperfections and brighten your under-eye area with our buildable to high-coverage concealers, leaving your skin looking flawless.



**Foundation**

Unlock the essence of beauty with our elixirs that infuse your skin with a burst of vitality.



**Contour**

Unlock the essence of beauty with our elixirs that infuse your skin with a burst of vitality.



**Blush**

Designed to keep your skin supple, hydrated, and protected throughout the day.



**Powder**

Take your skin care on the go. These are ideal for touch-ups and targeted treatments.



**Setting Spray**

Experience spa-worthy indulgence at home with our assortment of masks.



**Lips**

Pamper your pout with our lip-loving treatments, keeping your lips soft and smooth.



**Mascara**

Renew your skin with our facial peels that reveal a brighter complexion.



**Brows**

Show your beautiful eyes some love with our specialized eye treatments and formulas.



**Eyeliner**

The perfect way to hydrate and revitalize your skin whenever you need a boost.



# HAIR CARE



**HEAVY BASE DROPPER**  
30mL M7040-030



# UNLOCK THE SECRETS TO LUXURIOUS LOCKS

Discover the ultimate hair care experience with our carefully curated collection of products designed to transform your tresses.

Whether you're looking to revitalize your mane, restore its natural luster, or simply pamper yourself, our catalog has everything you need.



**Shampoo:** Say goodbye to dull, lifeless hair and hello to vibrant, healthy locks. Experience the invigorating sensation of a salon-quality wash every day.



### Conditioner

From deep hydration to frizz control, we have a formula for your specific needs.



### Scalp Exfoliator

Gently remove buildup from your scalp, promoting optimal hair growth and balance.



### Essence & Oils

These lightweight formulas absorb effortlessly, leaving your hair feeling silky smooth.



# BODY CARE



**HEAVY BASE DROPPER**  
30mL M7040-030



# UNVEIL YOUR MOST RADIANT SKIN

Treat your body to the ultimate luxury it deserves with our range of body care essentials.

Our formulas are your stepping stone to healthier, glowing skin.



**Body Oils:** Packed with essential vitamins and botanical extracts, these provide deep hydration and an alluring glow that leaves your skin feeling velvety smooth.

**Lotions:** These lightweight formulations provide enduring hydration that will leave you feeling fresh and revitalized all day.



### Masks

Transform your daily routine into a spa-like experience for a fresh, new complexion.



### Cleansers

Our gentle cleansers effortlessly remove impurities while adding moisture to your skin.



### Serums

These potent elixirs work their magic to target fine lines, wrinkles, dark spots, and more.



SPF



**HEAVY BASE DROPPER**  
30mL M7040-030



# YOUR SKIN'S HAPPY NEW BEST FRIEND

Step into the sunshine with confidence with ultimate protection at your fingertips. Our catalog is your gateway to the world of SPF,

offering a diverse range of formulations to cater to your unique needs. Whether you're looking for a standard sunscreen or a unique texture form,



**SPF Sticks:** Easy to apply, mess-free, and perfect for touch-ups, they fit into your bag or pocket seamlessly. Keep your skin shielded and fresh, no matter where your day takes you.



### Lip Oils

Our lip oils provide an elegant sheen while guarding your lips against sunburn.



### SPF Powders


These finely-milled powders effortlessly blend into your skin, leaving you with a flawless complexion.



### Creams

These silky-smooth formulations shield your skin from harmful UV rays and quench your skin.

[www.nfbeautygroup.com](http://www.nfbeautygroup.com)

 [nfbeautygroup](https://www.instagram.com/nfbeautygroup)

#### **USA - HQ**

2334 E. Valencia Dr., Fullerton,  
California, 92831 USA  
[sales@nfbeautygroup.com](mailto:sales@nfbeautygroup.com)  
tel: +1-714-522-7707

#### **KOREA**

709 Ho, 126, Beolmal-ro,  
Dongan-gu, Anyang-si,  
Gyeonggi-do, 14057 Korea  
[sales@nfbeautygroup.co.kr](mailto:sales@nfbeautygroup.co.kr)  
tel: 82-31-360-7110

#### **CHINA**

5th Floor, Building 2, No. 175  
Anshan Rd., Yuyao, Zhejiang,  
315499 China  
[sales@nfbeautygroup.cn](mailto:sales@nfbeautygroup.cn)  
tel: 86-0574-6218-0681